

G. Tartini

Sonata in Re
GT 5.D02

Clarinetto III in Si \flat

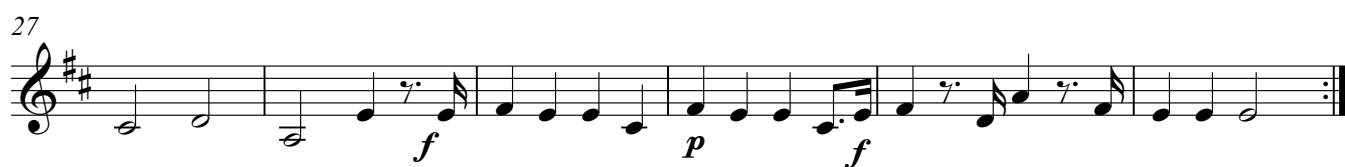
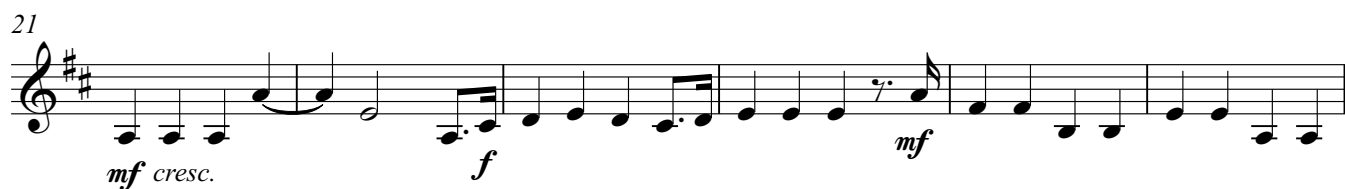
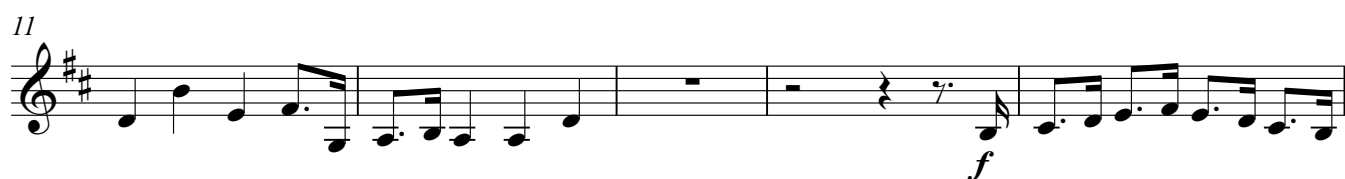
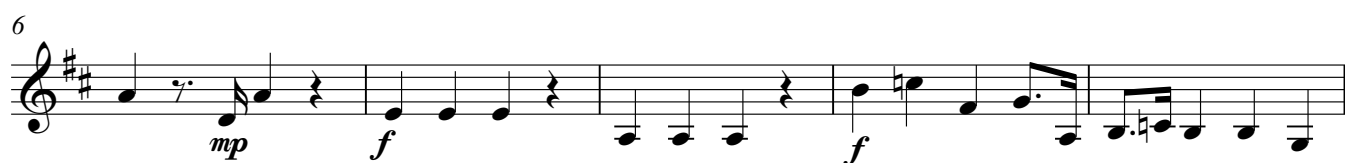
Sonata in Re

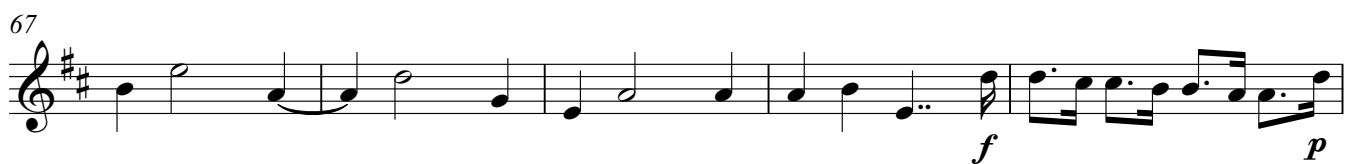
GT 5.D02

Giuseppe Tartini

arr. Anna Molaro

Allegro assai





Larghetto

Musical score for Clarinetto III in Si♭, Larghetto section. The score is written in treble clef with a key signature of two sharps (F# and C#) and a 4/4 time signature. The tempo is marked 'Larghetto'. The score consists of six staves of music, numbered 4, 5, 9, 14, 19, and 25. The music features various dynamics including *f* (forte), *p* (piano), *mf* (mezzo-forte), and *più p* (piano). The first staff (4) begins with a repeat sign and a *f* dynamic. The second staff (5) continues the melody. The third staff (9) includes first and second endings. The fourth staff (14) features a *mf* dynamic and a crescendo leading to a *f* dynamic. The fifth staff (19) includes a *p* dynamic and a *f* dynamic. The sixth staff (25) includes a *p* dynamic and a *più p* dynamic. The score concludes with a first and second ending.

Allegro

Musical score for Clarinetto III in Si♭, Allegro section. The score is written in treble clef with a key signature of two sharps (F# and C#) and a 3/4 time signature. The tempo is marked 'Allegro'. The score consists of four staves of music, numbered 8, 15, and 20. The music features various dynamics including *f* (forte), *mp* (mezzo-piano), *mf* (mezzo-forte), and *p* (piano). The first staff (8) begins with a *f* dynamic. The second staff (15) includes a *mp* dynamic and a *mf* dynamic. The third staff (20) includes a *p* dynamic. The score concludes with a first and second ending.

